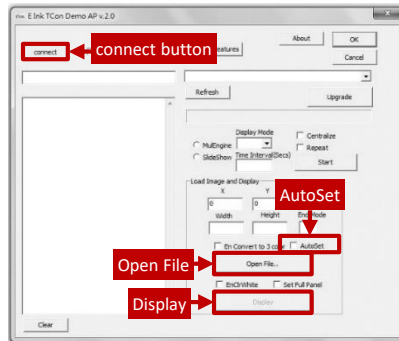
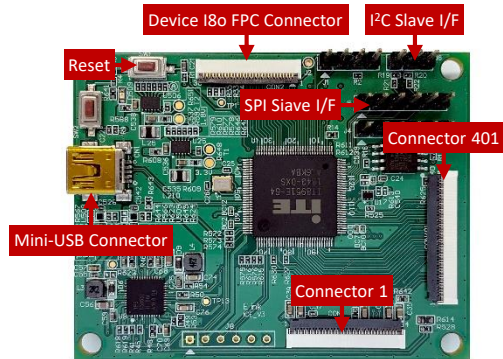


Eink Quick Start Guide for ICE 10.3"

Panel and ICE jig connection SOP

Demo Kit Hardware Description



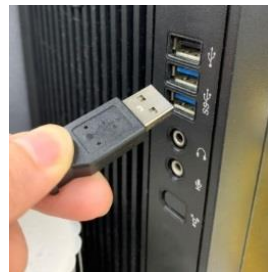
Button/Option	Function
Connect	Check USB connection
Open File	Load image and display panel
AutoSet	Auto set the parameters
Display	Image review

Assembly and Operating Instructions

- Attach the 10.3" panel to ICE Connector 1
- Connect the mini-USB cable to ICE



- Connect the mini-USB cable to PC/NB
- click **connect button**
- Check **EnFlip** option EnFlip
- click **AutoSet** option AutoSet
- click **Open File** to select image
- Image window shows up, click **OK** button
- Click **Display** to show image



Disassembly Instructions

- Disconnect the mini-USB from PC/NB
- Disconnect the mini-USB cable from ICE
- Detach the 10.3" panel from ICE